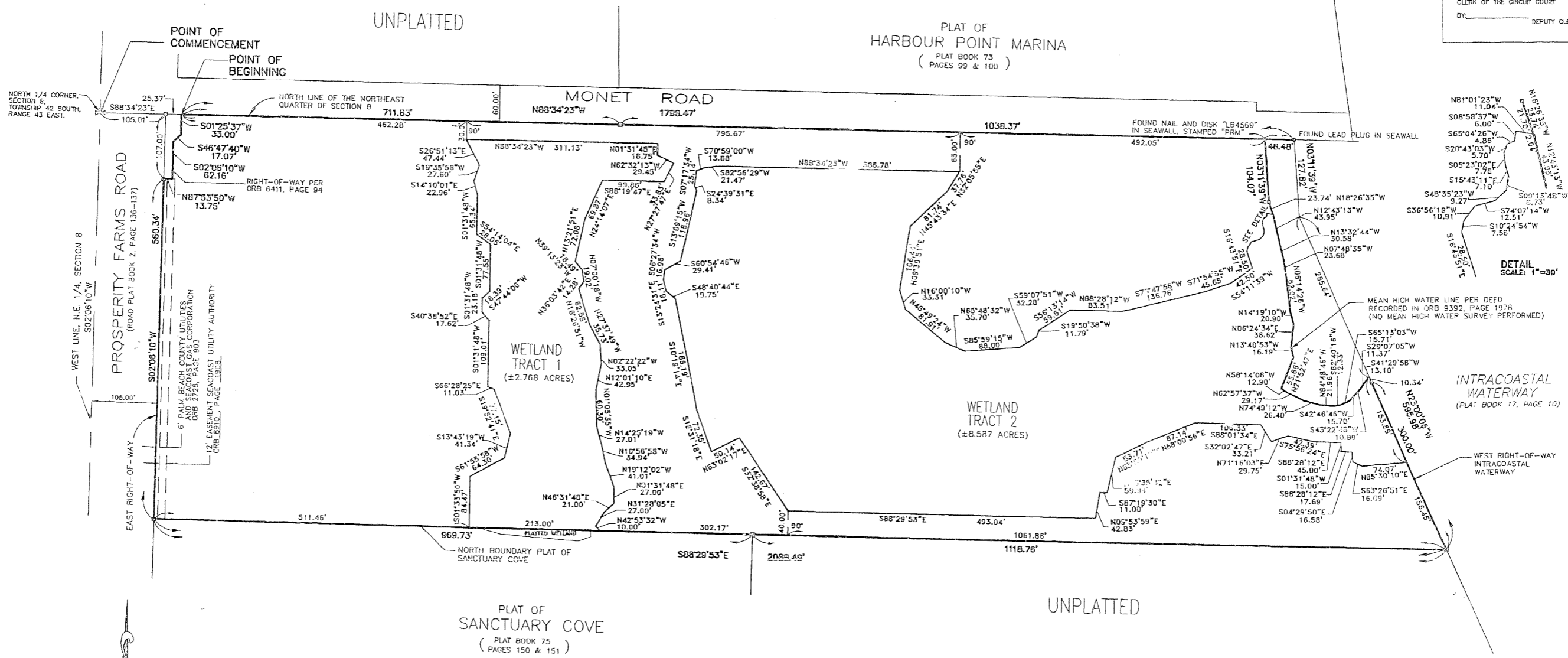


PLAT of SANCTUARY COVE II

LYING IN SECTION 8, TOWNSHIP 42 SOUTH, RANGE 43 EAST
VILLAGE OF NORTH PALM BEACH, PALM BEACH COUNTY, FLORIDA
JULY 1997
SHEET 1 of 2

STATE OF FLORIDA }
COUNTY OF PALM BEACH }
THIS PLAT WAS FILED FOR RECORD AT _____ THIS _____ DAY OF _____ A.D., 1997 AND DULY
RECORDED IN PLAT BOOK _____ ON
PAGES _____ THROUGH _____
DOROTHY H. WILKEN
CLERK OF THE CIRCUIT COURT
BY: _____ DEPUTY CLERK

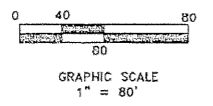


SURVEYOR'S NOTES:

1. BEARINGS SHOWN HEREON ARE REFERENCED TO THE NORTH LINE OF THE NORTHEAST QUARTER OF SECTION 8, TOWNSHIP 42 SOUTH, RANGE 43 EAST, BEARING S88°34'23"E.
2. □ PRM PERMANENT REFERENCE MONUMENT LB 3613 FOUND.
3. □ PRM PERMANENT REFERENCE MONUMENT LB 6770 SET.
4. NO BUILDING OR STRUCTURE OF ANY KIND SHALL BE PLACED ON ANY EASEMENT WITHOUT PRIOR WRITTEN CONSENT OF ALL EASEMENT BENEFICIARIES AND ALL APPLICABLE VILLAGE APPROVALS OF PERMITS AS REQUIRED FOR SUCH ENCROACHMENTS. LANDSCAPING SHALL MEET ALL VILLAGE REQUIREMENTS.
5. AREA = 28.964 ACRES, MORE OR LESS.
6. ORB - OFFICIAL RECORD BOOK

NOTICE: THERE MAY BE ADDITIONAL RESTRICTIONS THAT ARE NOT RECORDED ON THIS PLAT THAT MAY BE FOUND IN THE PUBLIC RECORDS OF PALM BEACH COUNTY, FLORIDA.

THIS INSTRUMENT PREPARED BY:
WILLIAM D. O'CONNOR,
PROFESSIONAL SURVEYOR & MAPPER, #4563
IN & FOR THE OFFICE OF:
CARNEY-NEUHAUS, INC.
11911 U.S. HIGHWAY ONE, SUITE 120
PALM BEACH GARDENS, FLORIDA 33408
(407) 622-1300



CARNEY-NEUHAUS, INC.
LB 6770

**PLAT OF
SANCTUARY COVE II**

DRAWN: YBO	F.B.I.	P.S.	DATE: 02/25/97
CHKD: WDO	FILE: 98-011	SCALE: 1"=80'	SHEET: 2 OF 2

11911 U.S. HIGHWAY ONE, SUITE 120
PALM BEACH GARDENS, FL 33408
TEL: (407) 622-1300
FAX: (407) 622-1428

1074 HIGHWAY AVENUE, SUITE 301
MIAMI BEACH, FL 33139
TEL: (305) 534-8522
FAX: (305) 534-5207

4101 N. ANDERSON AVE., SUITE 213
FORT LAUDERDALE, FL 33309
TEL: (954) 545-0530
FAX: (954) 545-0530